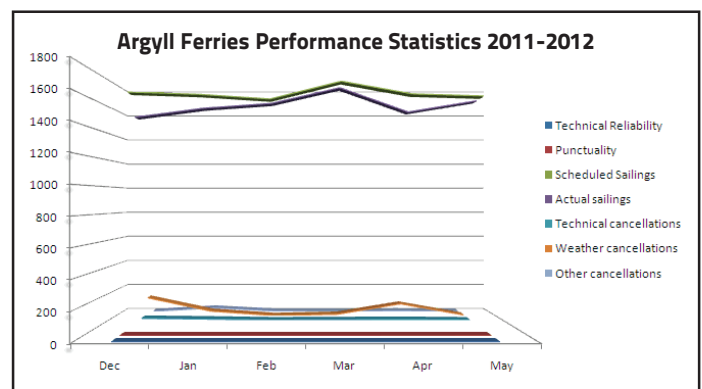
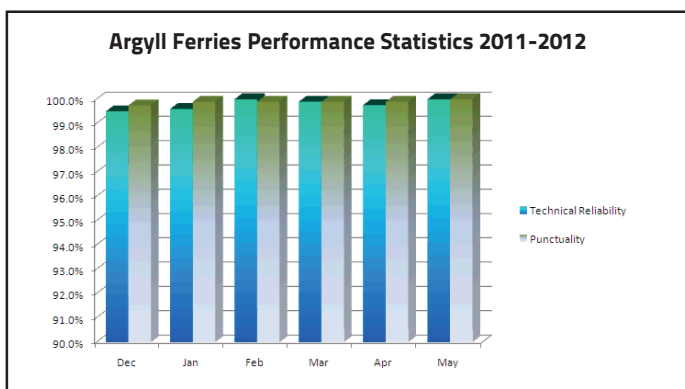


Performance Update - June 2012

	Apr 2012	May 2012
Reliability *	99.8%	100%
Punctuality *	99.9%	100%
Scheduled sailings **	1635	1621
Actual sailings	1536	1617
Non-weather-related cancellations	8***	0
Weather related cancellations	91	4



* *Weather-related cancellations, or circumstances beyond AFL's control, are not included in performance figures*

** *1 sailing = 1 crossing in 1 direction*

*** *In April, 4 sailings were lost due to a fuel line leak and 4 were lost to damage to the Gourock linkspan*